

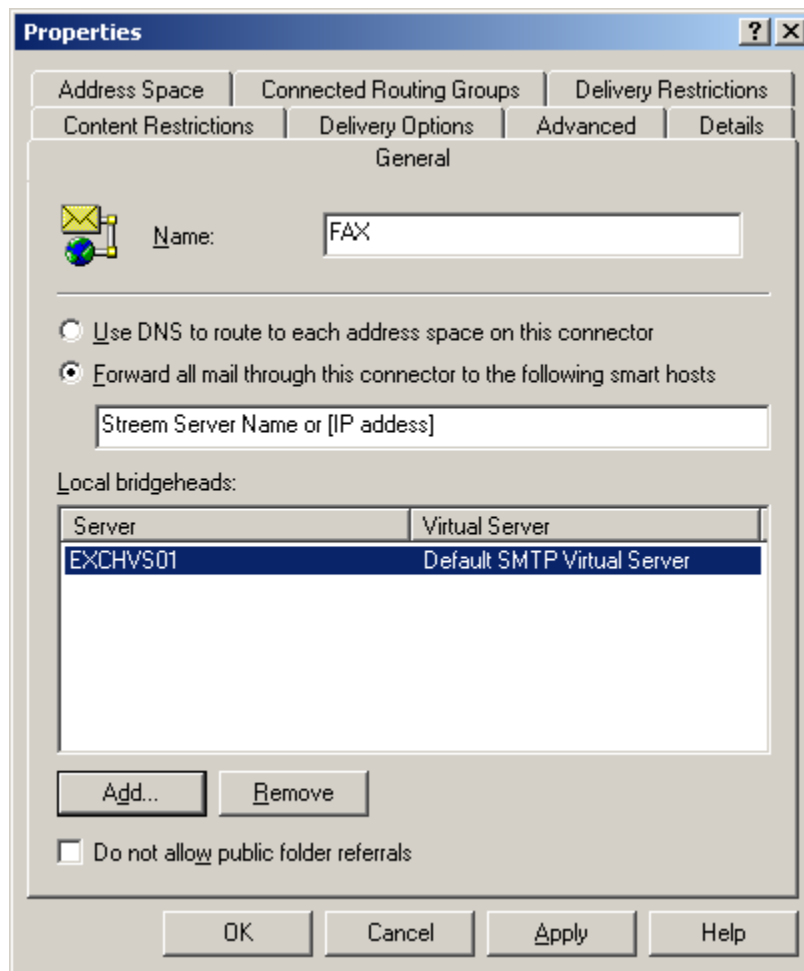
Microsoft Exchange 2000/2003 Configuration for Strem Fax

This configuration is necessary when using Outlook as the email client. This allows users to send faxes using the [fax:5551212] format. This also allows for direct faxing from entries in the Contacts list.

In order to route outbound email to fax destinations, a simple SMTP connector is required on the Microsoft Exchange Server. This connector routes all messages of type FAX to the Strem Server for conversion and processing via SMTP. Inbound faxes are handled by the Strem server and sent to Exchange recipient's primary SMTP address via SMTP.

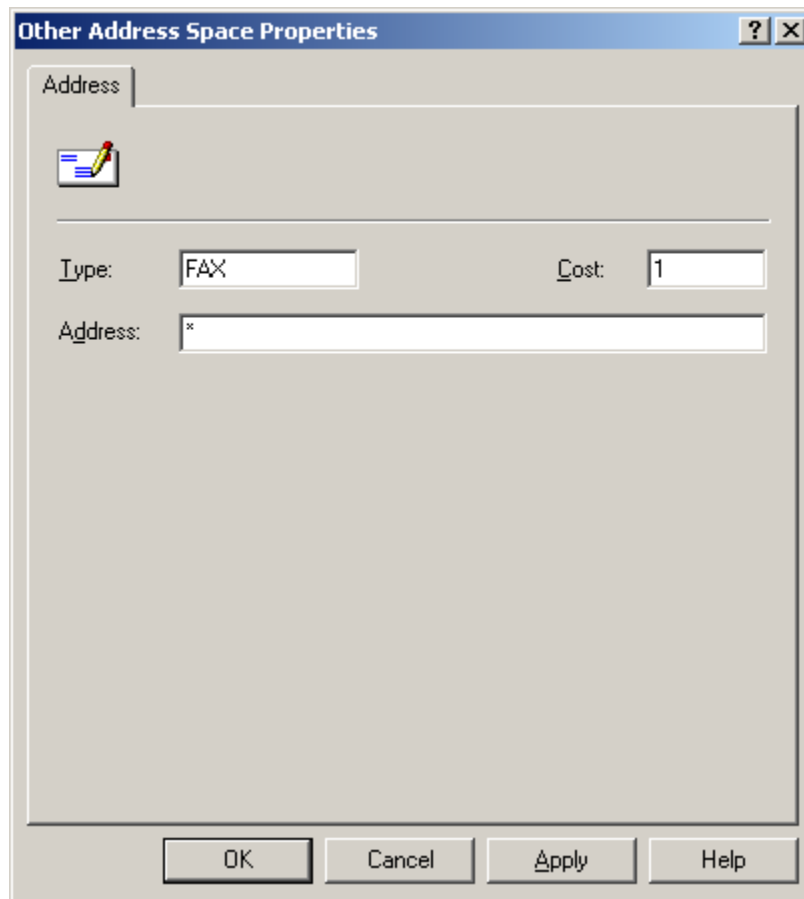
Exchange 2000/2003 Connector Setup:

1. From the Connectors folder in the Exchange Manager, select New SMTP Connector
2. Enter a name for the connector – Strem standard is "FAX"
3. Add the Strem Server name or IP address (using []) as the smart host
4. Add the bridgehead server(s)



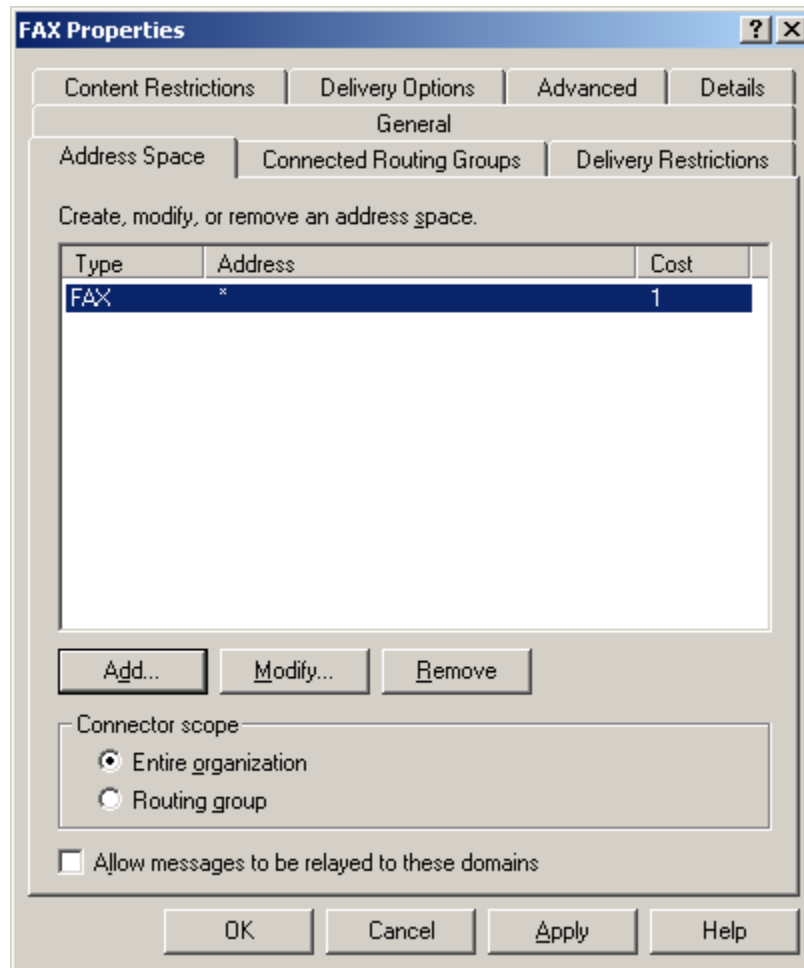
1. From the Address Space tab, Add an address space of Other

2. Set the type to FAX
3. Set the cost to 1
4. Set the address to "*" – this will route all messages of type FAX



The image shows a Windows-style dialog box titled "Other Address Space Properties". The dialog has a blue title bar with a question mark icon and a close button (X). Below the title bar, there is a tab labeled "Address". Inside the dialog, there is a large empty rectangular area. Below this area, there are three input fields: "Type:" with the value "FAX", "Cost:" with the value "1", and "Address:" with the value "*". At the bottom of the dialog, there are four buttons: "OK", "Cancel", "Apply", and "Help".

1. Select Entire organization



2. Click on Apply and OK.

This completes the Exchange configuration necessary for Stream to handle outbound fax messages.