

# Extensible Interface Platform

## An Intelligent, Enterprise Solution that Contributes to Automated Processes, Increased Productivity and Improved Communications.

- Scan to fax, email, and alert, with the touch of a button
- Permissions based access and list authentication for added security
- Scan and store documents for easy retrieval
- Retrieve and print stored documents with quickly

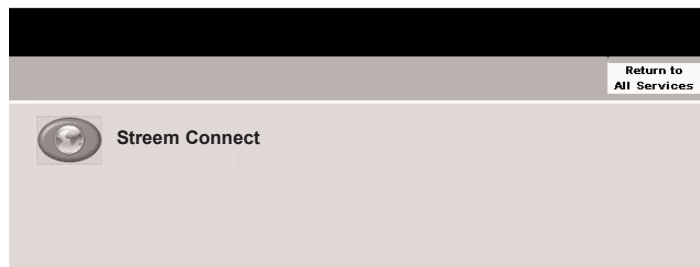
Cleo has partnered with Xerox to develop innovative software solutions, value-added services and optimized technologies for the Stroom and Xerox products. This joint effort provides unique solutions to address document management challenges while increasing productivity and reducing costs. Cleo's Stroom products supply a centralized, universal communications management system with the ability to send, receive, print, archive, and track information. Stroom directly integrates with Xerox products, and is enabled by the new Xerox Extensible Interface Platform™ (EIP).

### Extensible Features

Cleo's Stroom Connect integrates with Xerox MFP's and the EIP platform for Network Faxing, Emailing, and Alert Notification, including Scanning options. In addition, Stroom Connect provides the functionality to store documents in DocuShare, or another document repository, print to all networked devices, or retrieve forms and other documents from a library of information.

To begin distribution, users select the Stroom Connect application. Users may be required to login for added security.

The welcome screen appears as the profile is loaded, and then the user may select from options, including faxing, emailing, alerting, printing to network devices, scanning and storing, or secure transfer of files. The menu can be set up so that it is permission based upon user login.



### Benefits

- Reduce the cost of analog fax lines, fax machine supplies, and more
- Eliminate inefficiencies and improve productivity through process automation
- Reduce document delivery and management costs
- Realize a substantial ROI of as much as 75% in one year
- Enhance Security and Reliability through integration for regulatory compliance
- Maintain ongoing costs by eliminating hosted service costs for faxing
- Take advantage of per port configuration with no per user or per PC software
- Handle volume increases and upgrades with ease through a completely scalable system
- Experience a dedicated team of analysts that fully install, train, and support the system

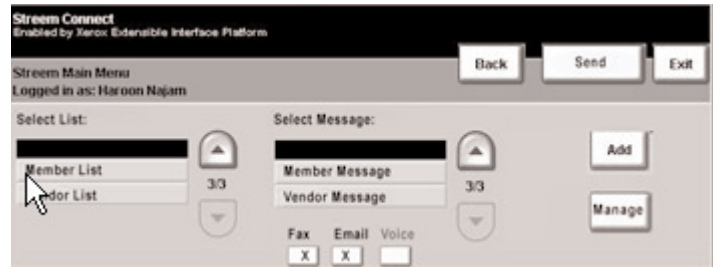
**Fax** - Distribution screens are custom to the distribution method originally chosen. Here, users select and add the recipient fax number to send a fax. The fax numbers are checked against a pre-authorized list for secure distribution. The 'Manage' button allows users to review and edit the selected recipients. Select 'Send' to deliver the fax.



**Email** - On the email display, users select and add the recipient's email address. The 'Manage' button allows users to review and edit the selected recipients. Once 'send' is selected, the email is sent to the recipients desktop. Text will appear in the body of the email, and scanned documents will appear as an attachment. Select 'Send' to deliver the email.

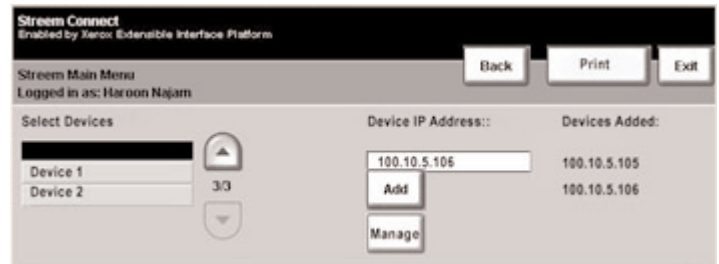


**Alert** - For alert notification, users select and add a pre-defined list and choose the appropriate methods of distribution, along with the message. The 'Manage' button allows users to review and edit the list and message selected. Select 'Send' to distribute the alert.



Once the user selects 'Send' to distribute the fax, email, or broadcast, the display provides the job information. Status information is also available by selecting the status button on the device.

**Print** - Scanned documents are easily printed to multiple networked devices by selecting and adding the devices. The 'Manage' button allows users to review and edit the selected devices. Documents will print to each device selected. Select 'Print' to print the documents to all selected devices.



**Save and Store** - To store documents in DocuShare, or other document repositories, place the document to scan on the feeder and select, then add, the folders for where the documents should be saved. The 'Manage' button allows users to review and edit the selected path. To Encrypt the document before storing, select the 'Encrypt' box. Select 'Store' to save and store the documents.



**Transfer** - Scanned documents are transferred via secure protocol. Select and add the host servers to transfer the information to. The 'Manage' button allows users to review and edit the selected host servers. Select 'Transfer' to send the information.



**CLEO COMMUNICATIONS**  
 4203 GALLERIA DRIVE  
 LOVES PARK, ILLINOIS 61111  
 PHONE. 815.639.1100  
 FAX. 888.435.2348

1.800.325.7732  
 WWW.CLEO.COM  
 STREEMINSALES@CLEO.COM

