

VersaLex Web GUI

VersaLex Suite

Web-based Operation

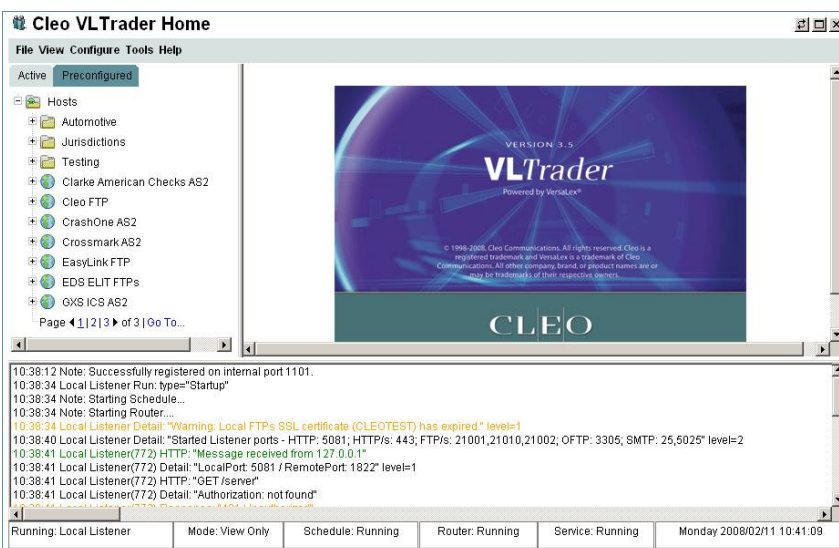
The VersaLex Web-based GUI allows companies to configure, monitor, manage and add capabilities to LexiCom or VLTrader remotely, via a standard web browser.

Check the status of file transfers, perform transfers, and access reports, files and logs without needing to go to the computer where VLTrader or LexiCom is installed.

Multi-user web access, available with VLTrader, allows companies to manage communications for multiple applications or purposes. Different users, each with their own unique groups of trading partners, can utilize the web browser interface remotely from each of their offices to manage their own area of responsibility.

The Web GUI also provides support for platforms that do not have a native GUI, such as UNIX systems. This makes the product easier to use, particularly on non-Windows systems.

The Web-based GUI is included with VLTrader; it is an available add-on feature for LexiCom.



Configure and manage secure communications remotely from anywhere in the world. Web-based Operation allows for multiple users to access the system and manage their distinct areas of responsibility.

Technical Details

- Supports user authentication configured by the VLTrader administrator
- The native and web browser user interfaces are virtually identical in layout and capability.
- The latest versions of either Internet Explorer or Netscape are recommended. For details and screen resolution requirements see: www.cleo.com/support/byproduct/VLTrader/sysreqs.php.

CLEO COMMUNICATIONS
4203 GALLERIA DRIVE
ROCKFORD, ILLINOIS 61111
PHONE . 815 . 654 . 8110
FAX . 815 . 654 . 8294

1 . 800 . 233 . CLEO
WWW . CLEO . COM
SALES@CLEO.COM

CLEO